

# Pioneers in Quality™ Expert to Expert Series: STK-5 & AMI-8

9-10 am (PT)

10-11 am (MT)

11 am-12 pm (CT)

12-1 pm (ET)

January 29, 2019



## For those participating that would like to use the Closed Captioning Service:

- Use this link to access the CC service:

<http://www.captionedtext.com/client/event.aspx?CustomerID=1519&EventID=3849131>

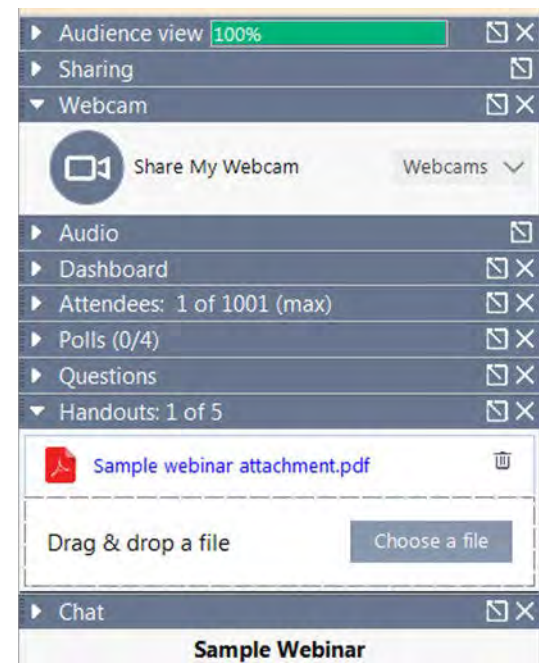
- You will also need this passcode 3849131.
- This information is also in the Chat box with a clickable link.

At the end of this session, participants will be able to:

- Apply concepts learned about the new Clinical Quality Language (CQL) expression language for the STK-5 & AMI-8a eCQMs
- Identify common issues and questions regarding STK-5 & AMI-8a eCQMs and
- Prepare to implement the CQL expression language for the 2019 eCQM reporting year (2020 data submission)

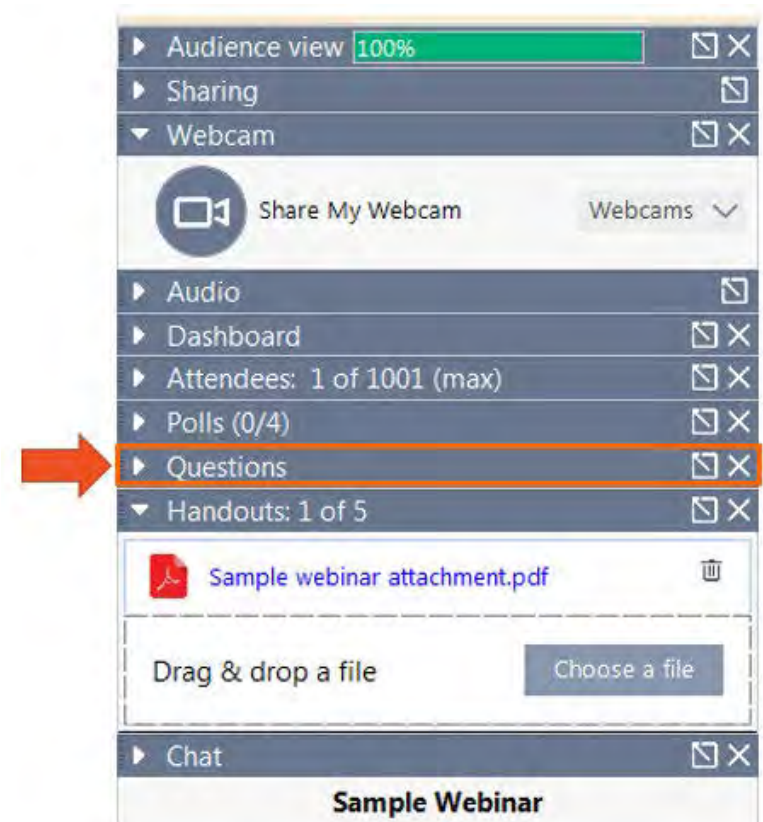
## Slides are available for download now!

- To access the slides, see the GoToWebinar “Handouts” Section is your participant dashboard
- Click the downward triangle to open the Handouts list, select the slides for today’s session, and download.



## This program is designed to be interactive.

- All participants are connected in **listen-only mode**; we are not using the raised hands feature
- Ask questions through the Questions function in the Dashboard
- Visit any links or resources noted in the slides
- Download the slides and share the recording



# Pioneers in Quality™

## Expert to Expert Series: STK-5 and AMI-8a



Log In | Request Guest Access

Contact Us | Careers | JCR Web Store | Press Room

Forgot password? | Log In Help

Search  Go

Accreditation Certification Standards **Measurement** Topics About Us Daily Update

Home > Measurement > Pioneers in Quality

Twitter Facebook Vimeo LinkedIn Share Print

Wednesday 11:52 CST, November 21, 2018

### Pioneers in Quality

Pioneers in Quality - Home

Proven Practices Webinar Series

#### Pioneers in Quality™ Recognition

2018 Pioneers in Quality Expert and Solution Contributors



## PIONEERS IN QUALITY™

### 2018 Proven Practices Collection and Webinar Series

Four hospitals and/or health systems [were recognized](#) as 2018 Pioneers in Quality™ Expert Contributors for their efforts to advance the evolution and utilization of electronic clinical quality measures (eQMs). These organizations presented during the Joint Commission's Pioneers in Quality™ 2018 eQCM Proven Practices webinar series and are featured within the 2018 Proven Practice Collection along with the five Experts Contributors recognized in 2017. You can access the 2018 [Proven Practices Collection here](#).



Pioneers in Quality: eQCM  
"Expert to Expert" Series  
Series Information/Session Replays

Promotional Video

In February, the webinar recording and slide deck will be accessible on The Joint Commission website via the Expert to Expert landing page ([https://www.jointcommission.org/piq\\_expert\\_to\\_expert\\_series/](https://www.jointcommission.org/piq_expert_to_expert_series/)).

As follow-up items are posted, an email will be sent to all individuals that registered.

## CE credits are provided for the Expert to Expert Series Webinars.

**This webinar is approved for 1.0 Continuing Education Credit for:**

- Accreditation Council for Continuing Medical Education (ACCME)
  - American Nurses Credentialing Center (ANCC)
  - American College of Healthcare Executives (ACHE)
  - California Board of Registered Nursing
  - International Association for Continuing Education and Training (IACET) (.1 credit)
  - Certified Joint Commission Professional (CJCP) Recertification Credit
- Continuing Education credits are available for the live webinar presentation only. Credits will not be available for webinar replays.**



## To claim credits, you must have:

- 1) Individually registered for the webinar.
- 2) Listened to the webinar in its entirety. Only those listening live during the session are eligible to receive credit\*.
- 3) Completed a post-program evaluation/attestation\*\*.

\* If you are listening with colleagues and did not use your own link/phone line to join, you can still claim CE credit if you meet these three criteria. An automated email after this session will provide information how to access the survey.

\*\* A program evaluation/attestation survey link will be sent to participants' emails after the webinar. For those completing the evaluation - *printable certificates will be emailed 2 weeks after the session*; all participant CE certificates will be sent at the same time.



## Disclosure Statement

These staff and speakers have disclosed that neither they nor their spouses/partners have any financial arrangements or affiliations with corporate organizations that either provide educational grants to this program or may be referenced in this activity:

- Lisa Anderson, MSN, RN Project Director, eClinical, Department of Quality Measurement
- Mia Nievera, MSN, RN Associate Project Director, eClinical, Department of Quality Measurement
- Karen Kolbusz, MBA, BSN, Associate Project Director, Department of Quality Measurement
- Lynn Perrine, MSN, RN, Senior Nurse Informaticist, Lantana Consulting Group

Mia Nievera, MSN, RN

Karen Kolbusz, MBA, BSN

# STK 5- Antithrombotic Therapy By the End of Hospital Day 2 (CMS72v7)

January 29, 2019



# Introduction

## Antithrombotic Therapy By End of Hospital Day Two



- Stroke is the No. 5 cause of death and a leading cause of serious, long-term disability in America (American Heart Association, 2018).
- The effectiveness of antithrombotic agents in reducing stroke mortality, stroke-related morbidity and recurrence rates has been studied in several large clinical trials. Aspirin is the antithrombotic agent that has been tested the most extensively.
- Early antithrombotic therapy, unless contraindicated, is recommended to reduce morbidity and mortality in patients with acute ischemic stroke.
- Oral administration of aspirin (initial dose is 325 mg) within 24 to 48 hours after stroke onset is recommended for treatment of most patients (Class I; Level of Evidence A) (Powers WJ, et. al., 2018).

Mia Nievera, MSN, RN

# CQL Basics Overview

January 29, 2019



# Electronic Clinical Quality Measures (eCQM)

## Evolving eCQM Standards



	Metadata	Data Model	Logic
Calendar Year 2018	HQMF (Metadata, Population Structure)	Quality Data Model	
Calendar Year 2019	HQMF (Metadata, Population Structure)	Quality Data Model	Clinical Quality Language

**Population Criteria**

▲ **Initial Population**

TJC."Encounter with Principal Diagnosis and Age"

▲ **Denominator**

TJC."Ischemic Stroke Encounter"

▲ **Denominator Exclusions**

TJC."Ischemic Stroke Encounters with Discharge Status"  
union TJC."Comfort Measures during Hospitalization"

▲ **Numerator**

TJC."Ischemic Stroke Encounter" IschemicStrokeEncounter  
with "Antithrombotic Therapy at Discharge" DischargeAntithrombotic  
such that DischargeAntithrombotic.authorDatetime during IschemicStrokeEncounter.relevantPeriod

**Definitions**

▲ **Antithrombotic Not Given at Discharge**

["Medication, Not Discharged": "Antithrombotic Therapy"] NoAntithromboticDischarge  
where NoAntithromboticDischarge.negationRationale in "Medical Reason"  
or NoAntithromboticDischarge.negationRationale in "Patient Refusal"

▲ **Antithrombotic Therapy at Discharge**

["Medication, Discharge": "Antithrombotic Therapy"]

▲ **Denominator**

TJC."Ischemic Stroke Encounter"

▲ **Denominator Exceptions**

TJC."Ischemic Stroke Encounter" IschemicStrokeEncounter  
with "Antithrombotic Not Given at Discharge" NoDischargeAntithrombotic  
such that NoDischargeAntithrombotic.authorDatetime during IschemicStrokeEncounter.relevantPeriod

**Functions**

▲ **Global.CalendarAgeInYearsAt(BirthDateTime DateTime, AsOf DateTime)**

years between ToDate(BirthDateTime)and ToDate(AsOf)

▲ **Global.Hospitalization(Encounter "Encounter, Performed")**

( singleton from ( ["Encounter, Performed": "Emergency Department Visit"] EDVisit  
where EDVisit.relevantPeriod ends 1 hour or less on or before start of Encounter.relevantPeriod  
) ) X  
return if X is null then Encounter.relevantPeriod else Interval[start of X.relevantPeriod, end of Encounter.relevantPeriod]

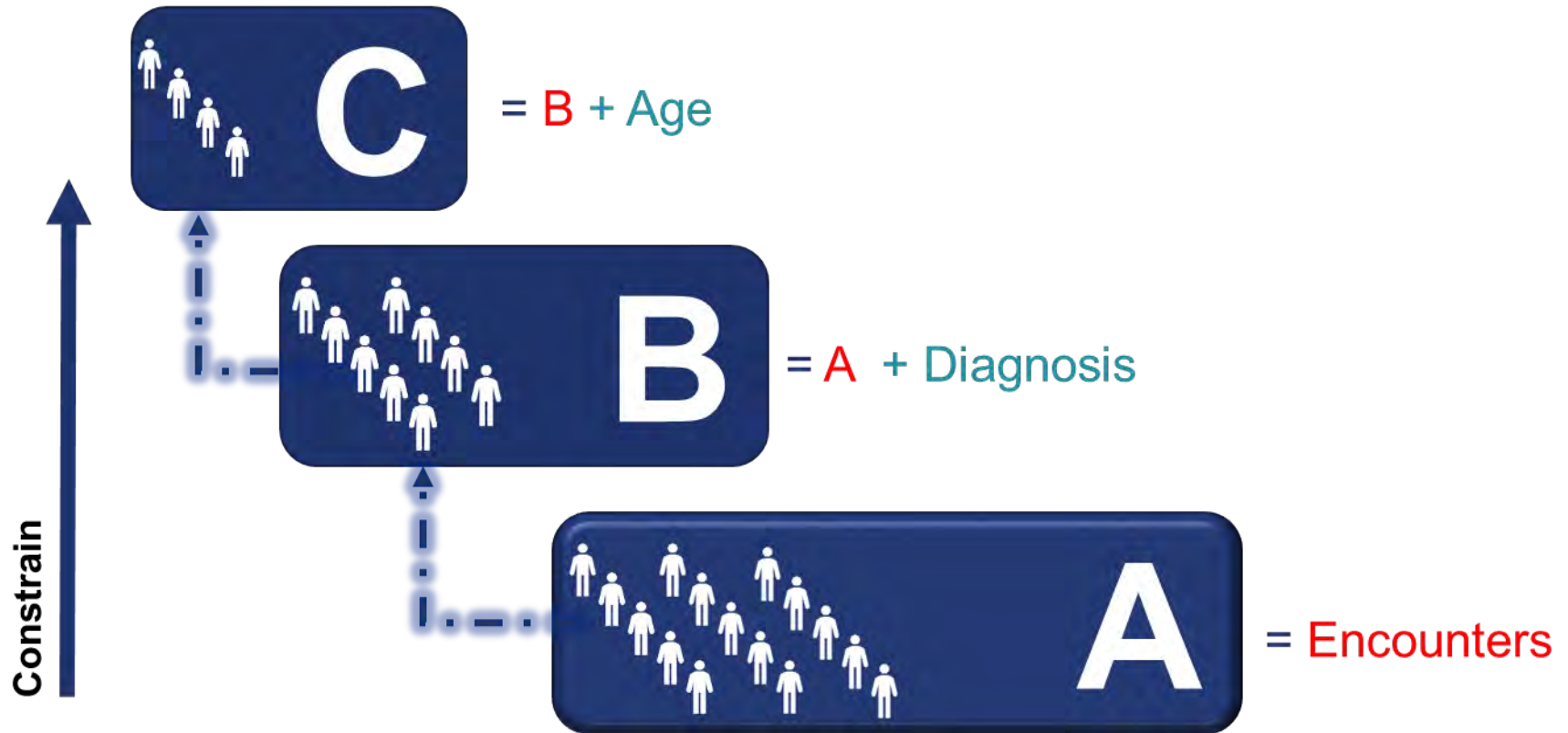
Building  
Blocks



# CQL Definition

Example of Generic Population Criteria

## Initial Population = C





# CQL Definition

**Initial Population:**  
TJC.Encounter with Principal Diagnosis and Age

## ▲ TJC.Encounter with Principal Diagnosis and Age

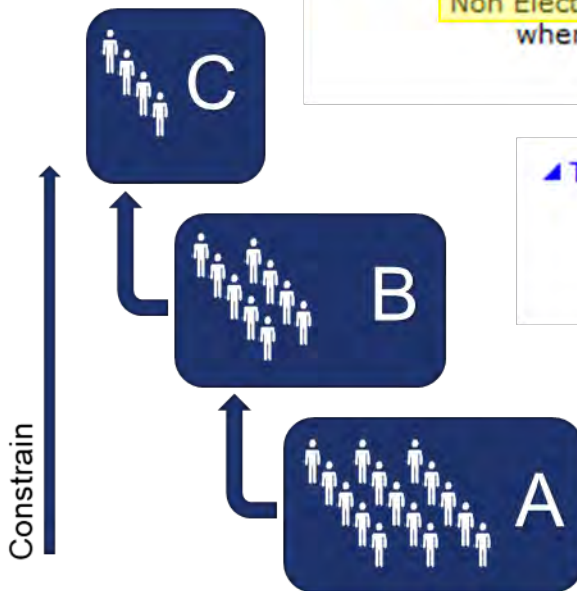
"All Stroke Encounter" AllStrokeEncounter  
with ["Patient Characteristic Birthdate"] BirthDate  
such that Global."CalendarAgeInYearsAt"(BirthDate.birthDatetime, start of AllStrokeEncounter.relevantPeriod) >= 18

## ▲ TJC.All Stroke Encounter

"Non Elective Inpatient Encounter" NonElectiveEncounter  
where NonElectiveEncounter.principalDiagnosis in "Hemorrhagic Stroke"  
or NonElectiveEncounter.principalDiagnosis in "Ischemic Stroke"

## ▲ TJC.Non Elective Inpatient Encounter

["Encounter, Performed": "Non-Elective Inpatient Encounter"] NonElectiveEncounter  
where Global."LengthInDays"(NonElectiveEncounter.relevantPeriod) <= 120  
and NonElectiveEncounter.relevantPeriod ends during "Measurement Period"



# Definition Anatomy

Definitions are made up of:

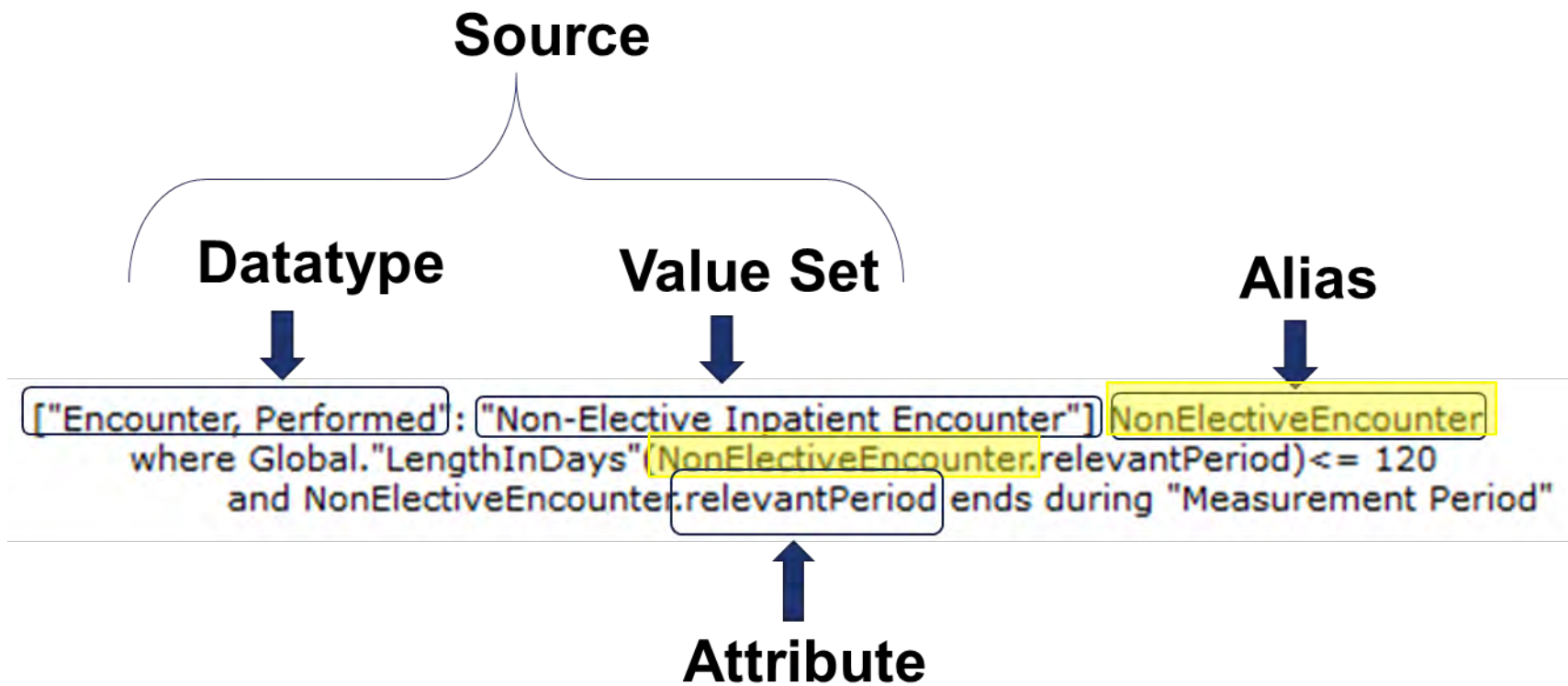
**Library Alias**

**Name**

▲ TJC.Non Elective Inpatient Encounter

["Encounter, Performed": "Non-Elective Inpatient Encounter"] NonElectiveEncounter  
where Global."LengthInDays"(NonElectiveEncounter.relevantPeriod)<= 120  
and NonElectiveEncounter.relevantPeriod ends during "Measurement Period"

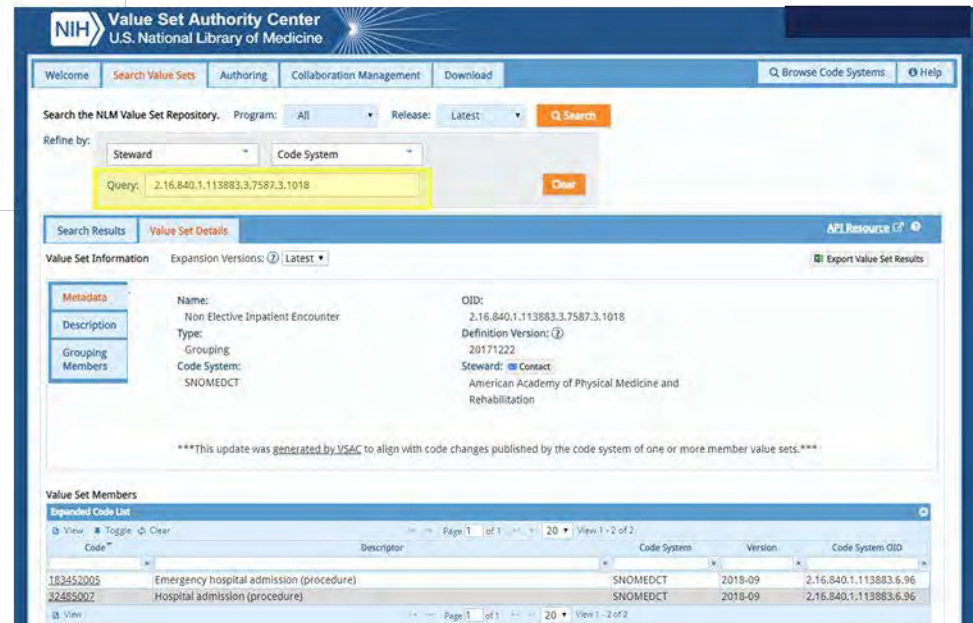
**Expression**



# Definition Anatomy- Value Sets

## Terminology

- valueset "Antithrombotic Therapy" using "2.16.840.1.113883.3.117.1.7.1.201"
- valueset "Comfort Measures" using "1.3.6.1.4.1.33895.1.3.0.45"
- valueset "Discharge To Acute Care Facility" using "2.16.840.1.113883.3.117.1.7.1.87"
- valueset "Discharged to Health Care Facility for Hospice Care" using "2.16.840.1.113883.3.117.1.7.1.207"
- valueset "Discharged to Home for Hospice Care" using "2.16.840.1.113883.3.117.1.7.1.209"
- valueset "Emergency Department Visit" using "2.16.840.1.113883.3.117.1.7.1.292"
- valueset "Ethnicity" using "2.16.840.1.114222.4.11.837"
- valueset "Hemorrhagic Stroke" using "2.16.840.1.113883.3.117.1.7.1.212"
- valueset "Ischemic Stroke" using "2.16.840.1.113883.3.117.1.7.1.247"
- valueset "Left Against Medical Advice" using "2.16.840.1.113883.3.117.1.7.1.308"
- valueset "Medical Reason" using "2.16.840.1.113883.3.117.1.7.1.473"
- valueset "Non-Elective Inpatient Encounter" using "2.16.840.1.113883.3.117.1.7.1.424"
- valueset "ONC Administrative Sex" using "2.16.840.1.113762.1.4.1"
- valueset "Patient Expired" using "2.16.840.1.113883.3.117.1.7.1.309"
- valueset "Patient Refusal" using "2.16.840.1.113883.3.117.1.7.1.93"
- valueset "Payer" using "2.16.840.1.114222.4.11.3591"
- valueset "Race" using "2.16.840.1.114222.4.11.836"



The screenshot displays the Value Set Authority Center (VSAC) interface, a web-based tool for managing value sets. The interface includes a search bar, navigation tabs, and a detailed view of a specific value set.

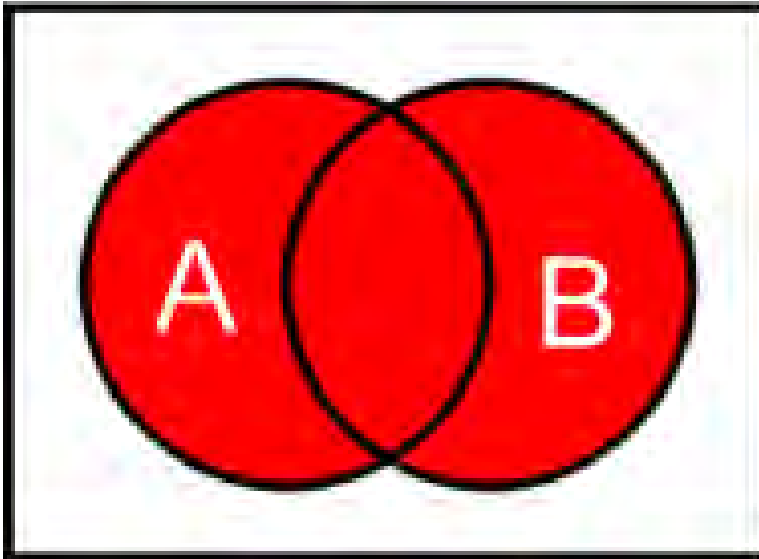
**Value Set Information**

Metadata	Value
Name:	Non Elective Inpatient Encounter
Type:	Grouping
Code System:	SNOMEDCT
OID:	2.16.840.1.113883.3.7587.3.1018
Definition Version:	20171222
Steward:	American Academy of Physical Medicine and Rehabilitation

**Value Set Members**

Code	Descriptor	Code System	Version	Code System OID
183452005	Emergency hospital admission (procedure)	SNOMEDCT	2018-09	2.16.840.1.113883.6.96
32485007	Hospital admission (procedure)	SNOMEDCT	2018-09	2.16.840.1.113883.6.96

# Common CQL Operators



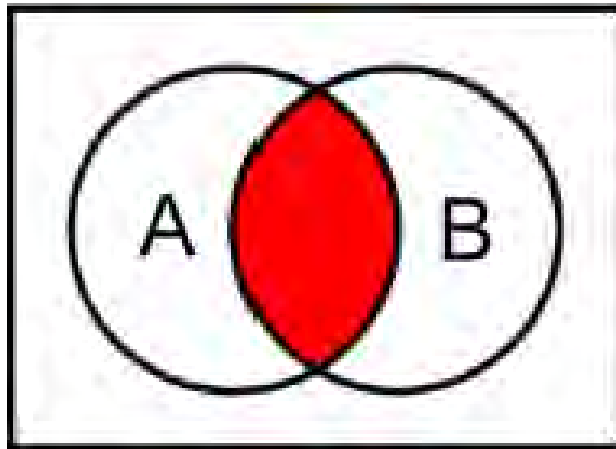
`union`

## Example: Combining a list of Diagnoses

### ▲ History of Uterine Surgery Diagnosis

```
["Diagnosis": "Perforation of Uterus"]  
union ["Diagnosis": "Uterine Window"]  
union ["Diagnosis": "Uterine Rupture"]  
union ["Diagnosis": "Cornual Ectopic Pregnancy"]
```

# Common CQL Operators



intersect

## Example:

List A= All inpatient encounters with age  $\geq 18$

List B= All encounters with a CBC level

## **Result of intersection=**

a list of any inpatient encounters with age  $\geq 18$   
and a CBC level



# Initial Population- STK-5 (CMS72v7)

Patients age 18 and older discharged from inpatient care (non-elective admissions) with a principal diagnosis of Ischemic or Hemorrhagic Stroke and a length of stay less than or equal to 120 days that ends during the measurement period

## Initial Population:

TJC.Encounter with Principal Diagnosis and Age

### TJC.Encounter with Principal Diagnosis and Age:

- "All Stroke Encounter" AllStrokeEncounter with ["Patient Characteristic Birthdate"] BirthDate such that Global."CalendarAgeInYearsAt"(BirthDate.birthDatetime, start of AllStrokeEncounter.relevantPeriod) $\geq$  18

#### TJC.All Stroke Encounter:

- "Non Elective Inpatient Encounter" NonElectiveEncounter where NonElectiveEncounter.principalDiagnosis in "Hemorrhagic Stroke" or NonElectiveEncounter.principalDiagnosis in "Ischemic Stroke"

#### TJC.Non Elective Inpatient Encounter:

- ["Encounter, Performed": "Non-Elective Inpatient Encounter"] NonElectiveEncounter where Global."LengthInDays"(NonElectiveEncounter.relevantPeriod) $\leq$  120 and NonElectiveEncounter.relevantPeriod ends during "Measurement Period"



# Initial Population

Patients age 18 and older discharged from inpatient care (non-elective admissions) with a principal diagnosis of Ischemic or Hemorrhagic Stroke and a length of stay less than or equal to 120 days that ends during the measurement period

## Initial Population:

TJC.Encounter with Principal Diagnosis and Age

TJC.Encounter with Principal Diagnosis and Age:

- "All Stroke Encounter" AllStrokeEncounter with ["Patient Characteristic Birthdate"] BirthDate such that Global."CalendarAgeInYearsAt"(BirthDate.birthDatetime, start of AllStrokeEncounter.relevantPeriod)>= 18

TJC.All Stroke Encounter:

- "Non Elective Inpatient Encounter" NonElectiveEncounter where NonElectiveEncounter.principalDiagnosis in "Hemorrhagic Stroke" or NonElectiveEncounter.principalDiagnosis in "Ischemic Stroke"

TJC.Non Elective Inpatient Encounter:

- ["Encounter, Performed": "Non-Elective Inpatient Encounter"] NonElectiveEncounter where Global."LengthInDays"(NonElectiveEncounter.*relevantPeriod*)<= 120 and NonElectiveEncounter.relevantPeriod ends during "Measurement Period"

# Initial Population

Patients age 18 and older discharged from inpatient care (non-elective admissions) with a principal diagnosis of Ischemic or Hemorrhagic Stroke and a length of stay less than or equal to 120 days that ends during the measurement period

## Initial Population:

TJC.Encounter with Principal Diagnosis and Age

TJC.Encounter with Principal Diagnosis and Age:

- "All Stroke Encounter" AllStrokeEncounter with ["Patient Characteristic Birthdate"] BirthDate such that Global."CalendarAgeInYearsAt"(BirthDate.birthDatetime, start of AllStrokeEncounter.relevantPeriod) $\geq$  18

TJC.All Stroke Encounter:

- "Non Elective Inpatient Encounter" NonElectiveEncounter where NonElectiveEncounter.principalDiagnosis in "Hemorrhagic Stroke" or NonElectiveEncounter.principalDiagnosis in "Ischemic Stroke"

TJC.Non Elective Inpatient Encounter:

- ["Encounter, Performed": "Non-Elective Inpatient Encounter"] NonElectiveEncounter where Global."**LengthInDays**"(NonElectiveEncounter.relevantPeriod) **$\leq$  120** and NonElectiveEncounter.relevantPeriod ends during "Measurement Period"

# Initial Population

Patients age 18 and older discharged from inpatient care (non-elective admissions) with a principal diagnosis of Ischemic or Hemorrhagic Stroke and a length of stay less than or equal to 120 days that ends during the measurement period

## Initial Population:

TJC.Encounter with Principal Diagnosis and Age

TJC.Encounter with Principal Diagnosis and Age:

- "All Stroke Encounter" AllStrokeEncounter with ["Patient Characteristic Birthdate"] BirthDate such that Global."CalendarAgeInYearsAt"(BirthDate.birthDatetime, start of AllStrokeEncounter.relevantPeriod)>= 18

TJC.All Stroke Encounter:

- **"Non Elective Inpatient Encounter"** NonElectiveEncounter where NonElectiveEncounter.principalDiagnosis in "Hemorrhagic Stroke" or NonElectiveEncounter.principalDiagnosis in "Ischemic Stroke"

TJC.Non Elective Inpatient Encounter:

- ["Encounter, Performed": "Non-Elective Inpatient Encounter"] NonElectiveEncounter where Global."LengthInDays"(NonElectiveEncounter.relevantPeriod)<= 120 and NonElectiveEncounter.relevantPeriod ends during "Measurement Period"

# Initial Population

Patients age 18 and older discharged from inpatient care (non-elective admissions) with a principal diagnosis of Ischemic or Hemorrhagic Stroke and a length of stay less than or equal to 120 days that ends during the measurement period

## Initial Population:

TJC.Encounter with Principal Diagnosis and Age

TJC.Encounter with Principal Diagnosis and Age:

- "All Stroke Encounter" AllStrokeEncounter with ["Patient Characteristic Birthdate"] BirthDate such that Global."CalendarAgeInYearsAt"(BirthDate.birthDatetime, start of AllStrokeEncounter.relevantPeriod)>= 18

TJC.All Stroke Encounter:

- "Non Elective Inpatient Encounter" **NonElectiveEncounter** where **NonElectiveEncounter.principalDiagnosis** in "Hemorrhagic Stroke" or NonElectiveEncounter.principalDiagnosis in "Ischemic Stroke"

TJC.Non Elective Inpatient Encounter:

- ["Encounter, Performed": "Non-Elective Inpatient Encounter"] NonElectiveEncounter where Global."LengthInDays"(NonElectiveEncounter.relevantPeriod)<= 120 and NonElectiveEncounter.relevantPeriod ends during "Measurement Period"

# Initial Population

Patients age 18 and older discharged from inpatient care (non-elective admissions) with a principal diagnosis of Ischemic or Hemorrhagic Stroke and a length of stay less than or equal to 120 days that ends during the measurement period

## Initial Population:

TJC.Encounter with Principal Diagnosis and Age

TJC.Encounter with Principal Diagnosis and Age:

- "All Stroke Encounter" AllStrokeEncounter with ["Patient Characteristic Birthdate"] BirthDate such that Global."CalendarAgeInYearsAt"(BirthDate.birthDatetime, start of AllStrokeEncounter.relevantPeriod)>= 18

### TJC.All Stroke Encounter:

- "Non Elective Inpatient Encounter" NonElectiveEncounter where  
*NonElectiveEncounter.principalDiagnosis in "Hemorrhagic Stroke" or  
NonElectiveEncounter.principalDiagnosis in "Ischemic Stroke"*

### TJC.Non Elective Inpatient Encounter:

- ["Encounter, Performed": "Non-Elective Inpatient Encounter"]  
NonElectiveEncounter  
where Global."LengthInDays"(NonElectiveEncounter.relevantPeriod)<= 120 and  
NonElectiveEncounter.relevantPeriod ends during "Measurement Period"

# Initial Population

Patients age 18 and older discharged from inpatient care (non-elective admissions) with a principal diagnosis of Ischemic or Hemorrhagic Stroke and a length of stay less than or equal to 120 days that ends during the measurement period

## Initial Population:

TJC.Encounter with Principal Diagnosis and Age

### TJC.Encounter with Principal Diagnosis and Age:

- **"All Stroke Encounter"** AllStrokeEncounter with ["Patient Characteristic Birthdate"] BirthDate such that Global."CalendarAgeInYearsAt"(BirthDate.birthDatetime, start of AllStrokeEncounter.relevantPeriod)>= 18

#### TJC.All Stroke Encounter:

- "Non Elective Inpatient Encounter" NonElectiveEncounter where NonElectiveEncounter.principalDiagnosis in "Hemorrhagic Stroke" or NonElectiveEncounter.principalDiagnosis in "Ischemic Stroke"

#### TJC.Non Elective Inpatient Encounter:

- ["Encounter, Performed": "Non-Elective Inpatient Encounter"] NonElectiveEncounter where Global."LengthInDays"(NonElectiveEncounter.relevantPeriod)<= 120 and NonElectiveEncounter.relevantPeriod ends during "Measurement Period"

# Initial Population

Patients age 18 and older discharged from inpatient care (non-elective admissions) with a principal diagnosis of Ischemic or Hemorrhagic Stroke and a length of stay less than or equal to 120 days that ends during the measurement period

## Initial Population:

TJC.Encounter with Principal Diagnosis and Age

### TJC.Encounter with Principal Diagnosis and Age:

- "All Stroke Encounter" AllStrokeEncounter with ["Patient Characteristic Birthdate"] BirthDate such that Global."*CalendarAgeInYearsAt*"(*BirthDate.birthDatetime, start of AllStrokeEncounter.relevantPeriod*)>= 18

#### TJC.All Stroke Encounter:

- "Non Elective Inpatient Encounter" NonElectiveEncounter where NonElectiveEncounter.principalDiagnosis in "Hemorrhagic Stroke" or NonElectiveEncounter.principalDiagnosis in "Ischemic Stroke"

#### TJC.Non Elective Inpatient Encounter:

- ["Encounter, Performed": "Non-Elective Inpatient Encounter"] NonElectiveEncounter where Global."*LengthInDays*"(NonElectiveEncounter.relevantPeriod)<= 120 and NonElectiveEncounter.relevantPeriod ends during "Measurement Period"



# Denominator

Patients with a principal diagnosis of Ischemic Stroke

Denominator:

TJC. "Ischemic Stroke Encounter"

TJC. Ischemic Stroke Encounter:

- *"Encounter with Principal Diagnosis and Age"* EncounterWithAge  
where EncounterWithAge.principalDiagnosis in "Ischemic Stroke"

# Denominator

Patients with a principal diagnosis of Ischemic Stroke

Denominator:

TJC."Ischemic Stroke Encounter"

TJC.Ischemic Stroke Encounter:

- "Encounter with Principal Diagnosis and Age" EncounterWithAge where EncounterWithAge.principalDiagnosis in "Ischemic Stroke"

TJC.Encounter with Principal Diagnosis and Age:

- "All Stroke Encounter" AllStrokeEncounter with ["Patient Characteristic Birthdate"] BirthDate such that Global."CalendarAgeInYearsAt"(BirthDate.birthDatetime, start of AllStrokeEncounter.relevantPeriod)>= 18

TJC.All Stroke Encounter:

- "Non Elective Inpatient Encounter" NonElectiveEncounter where NonElectiveEncounter.principalDiagnosis in "Hemorrhagic Stroke" or NonElectiveEncounter.principalDiagnosis in "Ischemic Stroke"

TJC.Non Elective Inpatient Encounter:

- ["Encounter, Performed": "Non-Elective Inpatient Encounter"] NonElectiveEncounter where Global."LengthInDays"(NonElectiveEncounter.relevantPeriod)<= 120 and NonElectiveEncounter.relevantPeriod ends during "Measurement Period"

# Denominator

Patients with a principal diagnosis of Ischemic Stroke

Denominator:

TJC."Ischemic Stroke Encounter"

TJC.Ischemic Stroke Encounter:

- "Encounter with Principal Diagnosis and Age" EncounterWithAge

where *EncounterWithAge.principalDiagnosis in "Ischemic Stroke"*

TJC.Encounter with Principal Diagnosis and Age:

- "All Stroke Encounter" AllStrokeEncounter with ["Patient Characteristic Birthdate"] BirthDate such that  
Global."CalendarAgeInYearsAt"(BirthDate.birthDatetime, start of AllStrokeEncounter.relevantPeriod)>= 18

TJC.All Stroke Encounter:

- "Non Elective Inpatient Encounter" NonElectiveEncounter where NonElectiveEncounter.principalDiagnosis in *"Hemorrhagic Stroke"* or NonElectiveEncounter.principalDiagnosis in "Ischemic Stroke"

TJC.Non Elective Inpatient Encounter:

- ["Encounter, Performed": "Non-Elective Inpatient Encounter"] NonElectiveEncounter where  
Global."LengthInDays"(NonElectiveEncounter.relevantPeriod)<= 120 and  
NonElectiveEncounter.relevantPeriod ends during "Measurement Period"

# Denominator Exclusions



Patients who have a duration of stay less than 2 days

Patients with intra-venous or intra-arterial Thrombolytic (t-PA) Therapy administered within 24 hours prior to arrival or anytime during hospitalization

Patients with comfort measures documented on day or the day after arrival

Denominator Exclusions: "Encounter Less Than Two Days"  
union "Encounter with Thrombolytic Therapy Medication or Procedures"  
union "Encounter with Thrombolytic Medication"  
union "Encounter with Comfort Measures"

# Denominator Exclusions

Patients who have a duration of stay less than 2 days

Patients with intra-venous or intra-arterial Thrombolytic (t-PA) Therapy administered within 24 hours prior to arrival or anytime during hospitalization

Patients with comfort measures documented on day or the day after arrival

**Denominator Exclusions:** "Encounter Less Than Two Days"  
union "Encounter with Thrombolytic Therapy Medication or Procedures"  
union "Encounter with Thrombolytic Medication"  
union "Encounter with Comfort Measures"

Encounter Less Than Two Days:

- TJC."Ischemic Stroke Encounter" **IschemicStrokeEncounter**  
where Global."Hospitalization Length of Stay"(IschemicStrokeEncounter)< 2

# Denominator Exclusions

Patients who have a duration of stay less than 2 days

Patients with intra-venous or intra-arterial Thrombolytic (t-PA) Therapy administered within 24 hours prior to arrival or anytime during hospitalization

Patients with comfort measures documented on day or the day after arrival

Denominator Exclusions: "Encounter Less Than Two Days"  
union "Encounter with Thrombolytic Therapy Medication or Procedures"  
union "Encounter with Thrombolytic Medication"  
union "Encounter with Comfort Measures"

Encounter Less Than Two Days:

- TJC."Ischemic Stroke Encounter" IschemicStrokeEncounter  
where *Global."Hospitalization Length of Stay"(IschemicStrokeEncounter)< 2*

# Denominator Exclusions

Patients who have a duration of stay less than 2 days

Patients with intra-venous or intra-arterial Thrombolytic (t-PA) Therapy administered within 24 hours prior to arrival or anytime during hospitalization

Patients with comfort measures documented on day or the day after arrival

**Denominator Exclusions:** "Encounter Less Than Two Days"  
union "Encounter with Thrombolytic Therapy Medication or Procedures"  
union "Encounter with Thrombolytic Medication"  
union "Encounter with Comfort Measures"

**Encounter with Thrombolytic Therapy Medication or Procedures:**

- TJC."Ischemic Stroke Encounter" IschemicStrokeEncounter with "Thrombolytic Therapy Medication or Procedures" ThrombolyticTherapy such that ThrombolyticTherapy.relevantPeriod starts 24 hours or less before start of Global."Hospitalization"(IschemicStrokeEncounter)

**Thrombolytic Therapy Medication or Procedures:**

- "Thrombolytic Medication"  
union ["Procedure, Performed": "Intravenous or Intra-arterial Thrombolytic (t-PA) Therapy"]

**Thrombolytic Medication:**

- ["Medication, Administered": "Thrombolytic (t-PA) Therapy"]

# Denominator Exclusions

Patients who have a duration of stay less than 2 days

Patients with intra-venous or intra-arterial Thrombolytic (t-PA) Therapy administered within 24 hours prior to arrival or anytime during hospitalization

Patients with comfort measures documented on day or the day after arrival

**Denominator Exclusions:** "Encounter Less Than Two Days"  
union "Encounter with Thrombolytic Therapy Medication or Procedures"  
union "Encounter with Thrombolytic Medication"  
union "Encounter with Comfort Measures"

**Encounter with Thrombolytic Therapy Medication or Procedures:**

- TJC."Ischemic Stroke Encounter" IschemicStrokeEncounter with "Thrombolytic Therapy Medication or Procedures" ThrombolyticTherapy such that ThrombolyticTherapy.relevantPeriod starts 24 hours or less before start of Global."Hospitalization"(IschemicStrokeEncounter)

**Thrombolytic Therapy Medication or Procedures:**

- "Thrombolytic Medication"  
union ["Procedure, Performed": "Intravenous or Intra-arterial Thrombolytic (t-PA) Therapy"]

**Thrombolytic Medication:**

- ["Medication, Administered": "Thrombolytic (t-PA) Therapy"]



# Denominator Exclusions

Patients who have a duration of stay less than 2 days

Patients with intra-venous or intra-arterial Thrombolytic (t-PA) Therapy administered within 24 hours prior to arrival or anytime during hospitalization

Patients with comfort measures documented on day or the day after arrival

**Denominator Exclusions:** "Encounter Less Than Two Days"  
union "Encounter with Thrombolytic Therapy Medication or Procedures"  
union "Encounter with Thrombolytic Medication"  
union "Encounter with Comfort Measures"

Encounter with Thrombolytic Therapy Medication or Procedures:

- TJC."Ischemic Stroke Encounter" IschemicStrokeEncounter with "Thrombolytic Therapy Medication or Procedures" ThrombolyticTherapy such that ThrombolyticTherapy.relevantPeriod starts 24 hours or less before start of Global."Hospitalization"(IschemicStrokeEncounter)

Thrombolytic Therapy Medication or Procedures:

- "Thrombolytic Medication"  
union ["Procedure, Performed": "Intravenous or Intra-arterial Thrombolytic (t-PA) Therapy"]

Thrombolytic Medication:

- ["**Medication, Administered**": "Thrombolytic (t-PA) Therapy"]

# Denominator Exclusions

Patients who have a duration of stay less than 2 days

Patients with intra-venous or intra-arterial Thrombolytic (t-PA) Therapy administered within 24 hours prior to arrival or anytime during hospitalization

Patients with comfort measures documented on day or the day after arrival

**Denominator Exclusions:** "Encounter Less Than Two Days"  
union "Encounter with Thrombolytic Therapy Medication or Procedures"  
union "Encounter with Thrombolytic Medication"  
union "Encounter with Comfort Measures"

Encounter with Thrombolytic Therapy Medication or Procedures:

- TJC."Ischemic Stroke Encounter" IschemicStrokeEncounter with "Thrombolytic Therapy Medication or Procedures" ThrombolyticTherapy such that ThrombolyticTherapy.relevantPeriod starts 24 hours or less before start of Global."Hospitalization"(IschemicStrokeEncounter)

**Thrombolytic Therapy Medication or Procedures:**

- "Thrombolytic Medication"  
union ["Procedure, Performed": "Intravenous or Intra-arterial Thrombolytic (t-PA) Therapy"]

**Thrombolytic Medication:**

- ["Medication, Administered": "Thrombolytic (t-PA) Therapy"]

# Denominator Exclusions

Patients who have a duration of stay less than 2 days

Patients with intra-venous or intra-arterial Thrombolytic (t-PA) Therapy administered within 24 hours prior to arrival or anytime during hospitalization

Patients with comfort measures documented on day or the day after arrival

Denominator Exclusions: "Encounter Less Than Two Days"  
union "Encounter with Thrombolytic Therapy Medication or Procedures"  
union "Encounter with Thrombolytic Medication"  
union "Encounter with Comfort Measures"

Encounter with Thrombolytic Therapy Medication or Procedures:

- TJC."Ischemic Stroke Encounter" IschemicStrokeEncounter  
with "Thrombolytic Therapy Medication or Procedures" ThrombolyticTherapy  
such that ThrombolyticTherapy.relevantPeriod starts 24 hours or less before start of  
Global."Hospitalization"(IschemicStrokeEncounter)

Thrombolytic Therapy Medication or Procedures:

- "Thrombolytic Medication"  
union ["Procedure, Performed": "Intravenous or Intra-arterial Thrombolytic (t-PA) Therapy"]

Thrombolytic Medication:

- ["Medication, Administered": "Thrombolytic (t-PA) Therapy"]

# Denominator Exclusions

Patients who have a duration of stay less than 2 days

Patients with intra-venous or intra-arterial Thrombolytic (t-PA) Therapy administered within 24 hours prior to arrival or anytime during hospitalization

Patients with comfort measures documented on day or the day after arrival

Denominator Exclusions: "Encounter Less Than Two Days"  
union "Encounter with Thrombolytic Therapy Medication or Procedures"  
union "Encounter with Thrombolytic Medication"  
union "Encounter with Comfort Measures"

Encounter with Thrombolytic Therapy Medication or Procedures:

- TJC."Ischemic Stroke Encounter" IschemicStrokeEncounter with "Thrombolytic Therapy Medication or Procedures" ThrombolyticTherapy such that **ThrombolyticTherapy.relevantPeriod starts 24 hours or less before start of Global."Hospitalization"(IschemicStrokeEncounter)**

Thrombolytic Therapy Medication or Procedures:

- "Thrombolytic Medication"  
union ["Procedure, Performed": "Intravenous or Intra-arterial Thrombolytic (t-PA) Therapy"]

Thrombolytic Medication:

- ["Medication, Administered": "Thrombolytic (t-PA) Therapy"]

# Denominator Exclusions

Patients who have a duration of stay less than 2 days

Patients with intra-venous or intra-arterial Thrombolytic (t-PA) Therapy administered within 24 hours prior to arrival or anytime during hospitalization

Patients with comfort measures documented on day or the day after arrival

Denominator Exclusions: "Encounter Less Than Two Days"  
union "Encounter with Thrombolytic Therapy Medication or Procedures"  
union "Encounter with Thrombolytic Medication"  
union "Encounter with Comfort Measures"

Encounter with Thrombolytic Therapy Medication or Procedures:

- TJC."Ischemic Stroke Encounter" IschemicStrokeEncounter with "Thrombolytic Therapy Medication or Procedures" ThrombolyticTherapy such that **ThrombolyticTherapy.relevantPeriod starts 24 hours or less before start of Global."Hospitalization"(IschemicStrokeEncounter)**

Thrombolytic Therapy Medication or Procedures:

- "Thrombolytic Medication"  
union **["Procedure, Performed": "Intravenous or Intra-arterial Thrombolytic (t-PA) Therapy"]**

Thrombolytic Medication:

- ["Medication, Administered": "Thrombolytic (t-PA) Therapy"]

# Denominator Exclusions

Patients who have a duration of stay less than 2 days

Patients with intra-venous or intra-arterial Thrombolytic (t-PA) Therapy administered within 24 hours prior to arrival or anytime during hospitalization

Patients with comfort measures documented on day or the day after arrival

Denominator Exclusions: "Encounter Less Than Two Days"  
 union "Encounter with Thrombolytic Therapy Medication or Procedures"  
 union "Encounter with Thrombolytic Medication"  
 union "Encounter with Comfort Measures"

## Encounter with Thrombolytic Therapy Medication or Procedures:

- TJC."Ischemic Stroke Encounter" IschemicStrokeEncounter with "Thrombolytic Therapy Medication or Procedures" ThrombolyticTherapy such that **ThrombolyticTherapy.relevantPeriod starts 24 hours or less before start of Global."Hospitalization"(IschemicStrokeEncounter)**

### Thrombolytic Therapy Medication or Procedures:

- "Thrombolytic Medication"  
 union **["Procedure, Performed": "Intravenous or Intra-arterial Thrombolytic (t-PA) Therapy"]**

### Thrombolytic Medication:

- ["Medication, Administered": "Thrombolytic (t-PA) Therapy"]

<u>Z92.82</u>	Status post administration of tPA (rtPA) in a different facility within the last 24 hours prior to admission to current facility	ICD10CM
---------------	--	---------

# Denominator Exclusions

Patients who have a duration of stay less than 2 days

Patients with intra-venous or intra-arterial Thrombolytic (t-PA) Therapy administered within 24 hours prior to arrival or anytime during hospitalization

Patients with comfort measures documented on day or the day after arrival

Denominator Exclusions: "Encounter Less Than Two Days"  
union "Encounter with Thrombolytic Therapy Medication or Procedures"  
union "Encounter with Thrombolytic Medication"  
union "Encounter with Comfort Measures"

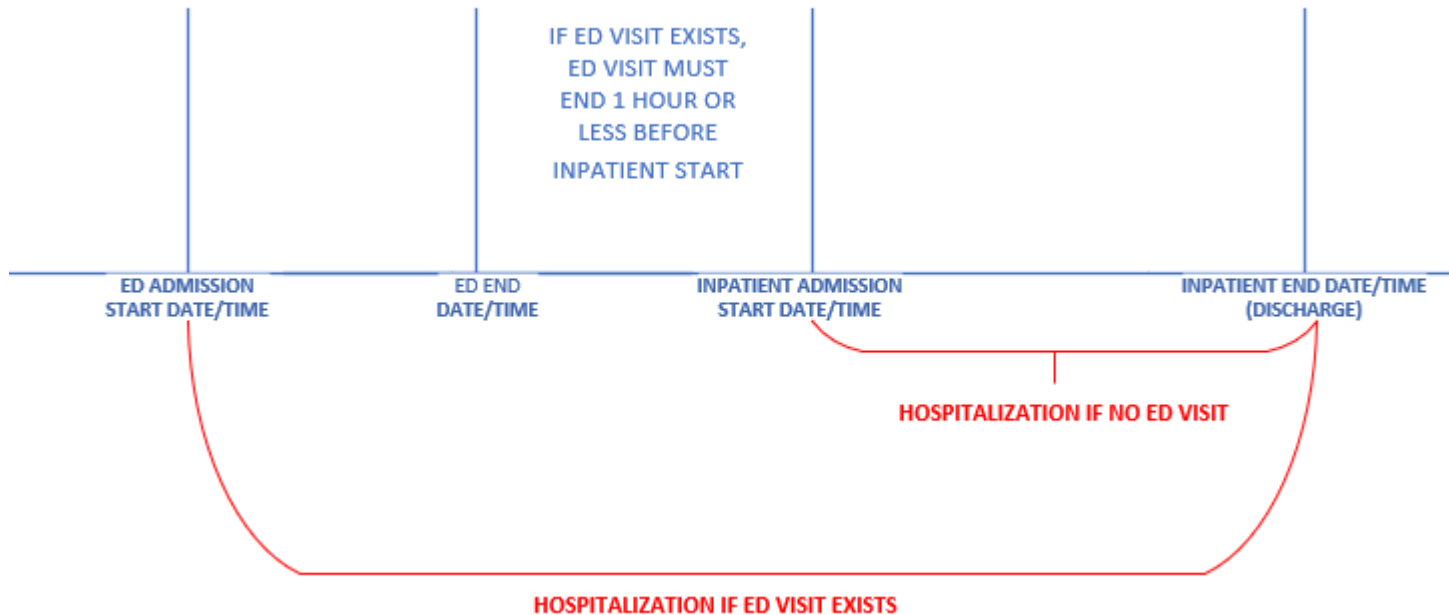
Encounter with Thrombolytic Therapy Medication or Procedures:

- TJC."Ischemic Stroke Encounter" IschemicStrokeEncounter with "Thrombolytic Therapy Medication or Procedures" ThrombolyticTherapy such that ThrombolyticTherapy.relevantPeriod starts 24 hours or less before start of Global."**Hospitalization"(IschemicStrokeEncounter)**

# Denominator Exclusions

Global.Hospitalization(Encounter "Encounter, Performed"):

- ( singleton from ( ["Encounter, Performed": "Emergency Department Visit"] EDVisit where EDVisit.relevantPeriod ends 1 hour or less on or before start of Encounter.relevantPeriod) ) X return if X is null then Encounter.relevantPeriod else Interval[start of X.relevantPeriod, end of Encounter.relevantPeriod]





# Denominator Exclusions

Patients who have a duration of stay less than 2 days

Patients with intra-venous or intra-arterial Thrombolytic (t-PA) Therapy administered within **24 hours prior to arrival** or anytime during hospitalization

Patients with comfort measures documented on day or the day after arrival

Denominator Exclusions: "Encounter Less Than Two Days"  
union "Encounter with Thrombolytic Therapy Medication or Procedures"  
union "Encounter with Thrombolytic Medication"  
union "Encounter with Comfort Measures"

Encounter with Thrombolytic Therapy Medication or Procedures:

- TJC."Ischemic Stroke Encounter" IschemicStrokeEncounter with "Thrombolytic Therapy Medication or Procedures" ThrombolyticTherapy such that ThrombolyticTherapy.relevantPeriod starts **24 hours or less before start of Global."Hospitalization"**(IschemicStrokeEncounter)

# Denominator Exclusions

Patients who have a duration of stay less than 2 days

Patients with intra-venous or intra-arterial Thrombolytic (t-PA) Therapy administered within 24 hours prior to arrival or anytime during hospitalization

Patients with comfort measures documented on day or the day after arrival

**Denominator Exclusions:** "Encounter Less Than Two Days"  
union "Encounter with Thrombolytic Therapy Medication or Procedures"  
union "Encounter with Thrombolytic Medication"  
union "Encounter with Comfort Measures"

## Encounter with Thrombolytic Medication:

- TJC."Ischemic Stroke Encounter" IschemicStrokeEncounter with "Thrombolytic Medication" Thrombolytic such that Thrombolytic.relevantPeriod starts during **Global."Hospitalization"**(IschemicStrokeEncounter)

## Thrombolytic Medication:

- **["Medication, Administered"]**: "Thrombolytic (t-PA) Therapy"]

# Denominator Exclusions

Patients who have a duration of stay less than 2 days

Patients with intra-venous or intra-arterial Thrombolytic (t-PA) Therapy administered within 24 hours prior to arrival **or anytime during hospitalization**

Patients with comfort measures documented on day or the day after arrival

**Denominator Exclusions:** "Encounter Less Than Two Days"  
union "Encounter with Thrombolytic Therapy Medication or Procedures"  
union "Encounter with Thrombolytic Medication"  
union "Encounter with Comfort Measures"

## Encounter with Thrombolytic Medication:

- TJC."Ischemic Stroke Encounter" IschemicStrokeEncounter with "Thrombolytic Medication" Thrombolytic such that Thrombolytic.relevantPeriod starts **during Global."Hospitalization"**(IschemicStrokeEncounter)

## Thrombolytic Medication:

- ["Medication, Administered": "Thrombolytic (t-PA) Therapy"]

# Denominator Exclusions

Patients who have a duration of stay less than 2 days

Patients with intra-venous or intra-arterial Thrombolytic (t-PA) Therapy administered within 24 hours prior to arrival or anytime during hospitalization

Patients with comfort measures documented on day or the day after arrival

**Denominator Exclusions:** "Encounter Less Than Two Days"  
union "Encounter with Thrombolytic Therapy Medication or Procedures"  
union "Encounter with Thrombolytic Medication"  
union "Encounter with Comfort Measures"

## Encounter with Comfort Measures:

- TJC."Ischemic Stroke Encounter" IschemicStrokeEncounter  
with TJC."Intervention Comfort Measures" ComfortMeasures  
such that Coalesce(start of ComfortMeasures.relevantPeriod, ComfortMeasures.authorDatetime)1 day or  
less on or after day of start of Global."Hospitalization"(IschemicStrokeEncounter)

## TJC.Intervention Comfort Measures:

- ["Intervention, Order": "Comfort Measures"]  
union ["Intervention, Performed": "Comfort Measures"]

# Denominator Exclusions

Patients who have a duration of stay less than 2 days

Patients with intra-venous or intra-arterial Thrombolytic (t-PA) Therapy administered within 24 hours prior to arrival or anytime during hospitalization

Patients with comfort measures documented on day or the day after arrival

**Denominator Exclusions:** "Encounter Less Than Two Days"  
union "Encounter with Thrombolytic Therapy Medication or Procedures"  
union "Encounter with Thrombolytic Medication"  
union "Encounter with Comfort Measures"

Encounter with Comfort Measures:

- TJC."Ischemic Stroke Encounter" IschemicStrokeEncounter with TJC."Intervention Comfort Measures" ComfortMeasures such that Coalesce(start of ComfortMeasures.relevantPeriod, ComfortMeasures.authorDatetime)1 day or less on or after day of start of Global."Hospitalization"(IschemicStrokeEncounter)

TJC.Intervention Comfort Measures:

- ["Intervention, Order": "Comfort Measures"]  
**union** ["Intervention, Performed": "Comfort Measures"]

# Denominator Exclusions

Patients who have a duration of stay less than 2 days

Patients with intra-venous or intra-arterial Thrombolytic (t-PA) Therapy administered within 24 hours prior to arrival or anytime during hospitalization

Patients with comfort measures documented on day or the day after arrival

Denominator Exclusions: "Encounter Less Than Two Days"  
union "Encounter with Thrombolytic Therapy Medication or Procedures"  
union "Encounter with Thrombolytic Medication"  
union "Encounter with Comfort Measures"

## Encounter with Comfort Measures:

- TJC."Ischemic Stroke Encounter" IschemicStrokeEncounter  
with TJC."Intervention Comfort Measures" ComfortMeasures  
such that Coalesce(start of ComfortMeasures.relevantPeriod, ComfortMeasures.**authorDatetime**)1 day or  
less on or after day of start of Global."Hospitalization"(IschemicStrokeEncounter)

## TJC.Intervention Comfort Measures:

- **["Intervention, Order"]**: "Comfort Measures"  
**union ["Intervention, Performed"]**: "Comfort Measures"]

# Denominator Exclusions

Patients who have a duration of stay less than 2 days

Patients with intra-venous or intra-arterial Thrombolytic (t-PA) Therapy administered within 24 hours prior to arrival or anytime during hospitalization

Patients with comfort measures documented on day or the day after arrival

Denominator Exclusions: "Encounter Less Than Two Days"  
union "Encounter with Thrombolytic Therapy Medication or Procedures"  
union "Encounter with Thrombolytic Medication"  
union "Encounter with Comfort Measures"

## Encounter with Comfort Measures:

- TJC."Ischemic Stroke Encounter" IschemicStrokeEncounter  
with TJC."Intervention Comfort Measures" ComfortMeasures  
such that Coalesce(start of ComfortMeasures.**relevantPeriod**, ComfortMeasures.authorDatetime)1 day or  
less on or after day of start of Global."Hospitalization"(IschemicStrokeEncounter)

## TJC.Intervention Comfort Measures:

- ["Intervention, Order": "Comfort Measures"]  
union **["Intervention, Performed"]**: "Comfort Measures"]

# Denominator Exclusions

Patients who have a duration of stay less than 2 days

Patients with intra-venous or intra-arterial Thrombolytic (t-PA) Therapy administered within 24 hours prior to arrival or anytime during hospitalization

Patients with comfort measures documented on day or the day after arrival

Denominator Exclusions: "Encounter Less Than Two Days"  
union "Encounter with Thrombolytic Therapy Medication or Procedures"  
union "Encounter with Thrombolytic Medication"  
union "Encounter with Comfort Measures"

## Encounter with Comfort Measures:

- TJC."Ischemic Stroke Encounter" IschemicStrokeEncounter  
with TJC."Intervention Comfort Measures" ComfortMeasures  
such that **Coalesce**(start of ComfortMeasures.relevantPeriod, ComfortMeasures.authorDatetime)1 day or  
less on or after day of start of Global."Hospitalization"(IschemicStrokeEncounter)
- TJC.Intervention Comfort Measures:
- ["Intervention, Order": "Comfort Measures"]  
union ["Intervention, Performed": "Comfort Measures"]



# Denominator Exclusions

Patients who have a duration of stay less than 2 days

Patients with intra-venous or intra-arterial Thrombolytic (t-PA) Therapy administered within 24 hours prior to arrival or anytime during hospitalization

Patients with comfort measures documented on day or the day after arrival

Denominator Exclusions: "Encounter Less Than Two Days"  
union "Encounter with Thrombolytic Therapy Medication or Procedures"  
union "Encounter with Thrombolytic Medication"  
union "Encounter with Comfort Measures"

## Encounter with Comfort Measures:

- TJC."Ischemic Stroke Encounter" IschemicStrokeEncounter  
with TJC."Intervention Comfort Measures" ComfortMeasures  
such that **Coalesce**(start of ComfortMeasures.**relevantPeriod**, ComfortMeasures.**authorDatetime**)1 day or  
less on or after day of start of Global."Hospitalization"(IschemicStrokeEncounter)
- TJC.Intervention Comfort Measures:
  - ["Intervention, Order": "Comfort Measures"]  
union ["Intervention, Performed": "Comfort Measures"]

# Denominator Exclusions

Patients who have a duration of stay less than 2 days

Patients with intra-venous or intra-arterial Thrombolytic (t-PA) Therapy administered within 24 hours prior to arrival or anytime during hospitalization

Patients with comfort measures documented on day or the day after arrival

Denominator Exclusions: "Encounter Less Than Two Days"  
union "Encounter with Thrombolytic Therapy Medication or Procedures"  
union "Encounter with Thrombolytic Medication"  
union "Encounter with Comfort Measures"

## Encounter with Comfort Measures:

- TJC."Ischemic Stroke Encounter" IschemicStrokeEncounter  
with TJC."Intervention Comfort Measures" ComfortMeasures  
such that Coalesce(start of ComfortMeasures.relevantPeriod, ComfortMeasures.authorDatetime) **1 day or less**  
**on or after day of start of Global."Hospitalization"**(IschemicStrokeEncounter)

## TJC.Intervention Comfort Measures:

- ["Intervention, Order": "Comfort Measures"]  
union ["Intervention, Performed": "Comfort Measures"]

# Denominator Exclusions

Patients who have a duration of stay less than 2 days

Patients with intra-venous or intra-arterial Thrombolytic (t-PA) Therapy administered within 24 hours prior to arrival or anytime during hospitalization

Patients with comfort measures documented on day or the day after arrival

Denominator Exclusions: "Encounter Less Than Two Days"  
union "Encounter with Thrombolytic Therapy Medication or Procedures"  
union "Encounter with Thrombolytic Medication"  
union "Encounter with Comfort Measures"

## Encounter with Comfort Measures:

- TJC."Ischemic Stroke Encounter" IschemicStrokeEncounter  
with TJC."Intervention Comfort Measures" ComfortMeasures  
such that Coalesce(start of ComfortMeasures.relevantPeriod, ComfortMeasures.authorDatetime)1 day or  
less on or after day of start of Global."Hospitalization"(IschemicStrokeEncounter)

## TJC.Intervention Comfort Measures:

- ["Intervention, Order": "Comfort Measures"]  
union ["Intervention, Performed": "Comfort Measures"]

# Denominator Exclusions

Patients who have a duration of stay less than 2 days

Patients with intra-venous or intra-arterial Thrombolytic (t-PA) Therapy administered within 24 hours prior to arrival or anytime during hospitalization

Patients with comfort measures documented on day or the day after arrival

Denominator Exclusions: "Encounter Less Than Two Days"  
union "Encounter with Thrombolytic Therapy Medication or Procedures"  
union "Encounter with Thrombolytic Medication"  
union "Encounter with Comfort Measures"

## Encounter with Comfort Measures:

- TJC."Ischemic Stroke Encounter" IschemicStrokeEncounter  
with TJC."Intervention Comfort Measures" ComfortMeasures  
such that Coalesce(start of ComfortMeasures.relevantPeriod, ComfortMeasures.authorDatetime) **1 day or less** **on** or after **day of** start of Global."Hospitalization"(IschemicStrokeEncounter)

## TJC.Intervention Comfort Measures:

- ["Intervention, Order": "Comfort Measures"]  
union ["Intervention, Performed": "Comfort Measures"]

# Denominator Exclusions

Patients who have a duration of stay less than 2 days

Patients with intra-venous or intra-arterial Thrombolytic (t-PA) Therapy administered within 24 hours prior to arrival or anytime during hospitalization

Patients with comfort measures documented on day or the day after arrival

**Denominator Exclusions:** "Encounter Less Than Two Days"  
union "Encounter with Thrombolytic Therapy Medication or Procedures"  
union "Encounter with Thrombolytic Medication"  
union "Encounter with Comfort Measures"

## Encounter with Comfort Measures:

- TJC."Ischemic Stroke Encounter" IschemicStrokeEncounter  
with TJC."Intervention Comfort Measures" ComfortMeasures  
such that Coalesce(start of ComfortMeasures.relevantPeriod, ComfortMeasures.authorDatetime) **1 day or less**  
**on or after day of start of Global."Hospitalization"**(IschemicStrokeEncounter)

## TJC.Intervention Comfort Measures:

- ["Intervention, Order": "Comfort Measures"]  
union ["Intervention, Performed": "Comfort Measures"]

# Numerator

Patients who had antithrombotic therapy administered the day of or day after hospital arrival

**Numerator:**

"Encounter with Antithrombotic Therapy"

**Encounter with Antithrombotic Therapy:**

- TJC."Ischemic Stroke Encounter" IschemicStrokeEncounter with ["Medication, Administered": "Antithrombotic Therapy"] Antithrombotic such that Antithrombotic.relevantPeriod starts 1 day or less on or after day of start of Global."Hospitalization"(IschemicStrokeEncounter)

# Numerator

Patients who had antithrombotic therapy administered the day of or day after hospital arrival

Numerator:

"Encounter with Antithrombotic Therapy"

Encounter with Antithrombotic Therapy:

- TJC. "Ischemic Stroke Encounter" IschemicStrokeEncounter with ["Medication, Administered": "Antithrombotic Therapy"] Antithrombotic such that Antithrombotic.relevantPeriod *starts 1 day or less on or after day of start of Global. "Hospitalization"*(IschemicStrokeEncounter)

# Denominator Exceptions

Patients with a documented reason for not administering antithrombotic therapy the day of or day after hospital arrival

## Denominator Exceptions:

### "No Antithrombotic Ordered During Hospitalization"

#### No Antithrombotic Ordered During Hospitalization:

- TJC."Ischemic Stroke Encounter" IschemicStrokeEncounter with "No Antithrombotic Ordered" NoAntithrombotic such that NoAntithrombotic.authorDatetime 1 day or less on or after day of start of Global."Hospitalization"(IschemicStrokeEncounter)

#### No Antithrombotic Ordered:

- "No Antithrombotic Ordered for Medical Reason or Patient Refusal" union "No Antithrombotic Administered"

#### No Antithrombotic Ordered for Medical Reason or Patient Refusal:

- ["Medication, Not Ordered": "Antithrombotic Therapy"]  
NoAntithromboticOrder  
where NoAntithromboticOrder.negationRationale in "Medical Reason"  
or NoAntithromboticOrder.negationRationale in "Patient Refusal"

#### No Antithrombotic Administered:

- ["Medication, Not Administered": "Antithrombotic Therapy"]  
NoAntithromboticGiven  
where NoAntithromboticGiven.negationRationale in "Medical Reason"  
or NoAntithromboticGiven.negationRationale in "Patient Refusal"



# Denominator Exceptions

Patients with a documented reason for not administering antithrombotic therapy the day of or day after hospital arrival

## Denominator Exceptions:

### "No Antithrombotic Ordered During Hospitalization"

#### No Antithrombotic Ordered During Hospitalization:

- TJC."Ischemic Stroke Encounter" IschemicStrokeEncounter with "No Antithrombotic Ordered" NoAntithrombotic such that NoAntithrombotic.authorDatetime 1 day or less on or after day of start of Global."Hospitalization"(IschemicStrokeEncounter)

#### No Antithrombotic Ordered:

- "No Antithrombotic Ordered for Medical Reason or Patient Refusal" union "No Antithrombotic Administered"

#### No Antithrombotic Ordered for Medical Reason or Patient Refusal:

- ["Medication, Not Ordered": "Antithrombotic Therapy"]  
NoAntithromboticOrder  
where NoAntithromboticOrder.negationRationale in "Medical Reason"  
or NoAntithromboticOrder.negationRationale in "Patient Refusal"

#### No Antithrombotic Administered:

- ["Medication, Not Administered": "Antithrombotic Therapy"]  
NoAntithromboticGiven  
where **NoAntithromboticGiven.negationRationale in "Medical Reason"  
or NoAntithromboticGiven.negationRationale in "Patient Refusal"**

# Denominator Exceptions

Patients with a documented reason for not administering antithrombotic therapy the day of or day after hospital arrival

## Denominator Exceptions:

### "No Antithrombotic Ordered During Hospitalization"

#### No Antithrombotic Ordered During Hospitalization:

- TJC. "Ischemic Stroke Encounter" IschemicStrokeEncounter with "No Antithrombotic Ordered" NoAntithrombotic such that NoAntithrombotic.authorDatetime 1 day or less on or after day of start of Global."Hospitalization"(IschemicStrokeEncounter)

#### No Antithrombotic Ordered:

- "No Antithrombotic Ordered for Medical Reason or Patient Refusal" union "No Antithrombotic Administered"

#### No Antithrombotic Ordered for Medical Reason or Patient Refusal:

- ["**Medication, Not Ordered**": "Antithrombotic Therapy"]  
NoAntithromboticOrder  
where **NoAntithromboticOrder.negationRationale** in "Medical Reason"  
or **NoAntithromboticOrder.negationRationale** in "Patient Refusal"

#### No Antithrombotic Administered:

- ["Medication, Not Administered": "Antithrombotic Therapy"]  
NoAntithromboticGiven  
where NoAntithromboticGiven.negationRationale in "Medical Reason"  
or NoAntithromboticGiven.negationRationale in "Patient Refusal"

# Denominator Exceptions

Patients with a documented reason for not administering antithrombotic therapy the day of or day after hospital arrival

## Denominator Exceptions:

### "No Antithrombotic Ordered During Hospitalization"

#### No Antithrombotic Ordered During Hospitalization:

- TJC. "Ischemic Stroke Encounter" IschemicStrokeEncounter with "No Antithrombotic Ordered" NoAntithrombotic such that NoAntithrombotic.authorDatetime 1 day or less on or after day of start of Global."Hospitalization"(IschemicStrokeEncounter)

#### No Antithrombotic Ordered:

- "No Antithrombotic **Ordered** for Medical Reason or Patient Refusal" union "No Antithrombotic **Administered**"

#### No Antithrombotic Ordered for Medical Reason or Patient Refusal:

- ["Medication, Not Ordered": "Antithrombotic Therapy"]  
NoAntithromboticOrder  
where NoAntithromboticOrder.negationRationale in "Medical Reason"  
or NoAntithromboticOrder.negationRationale in "Patient Refusal"

#### No Antithrombotic Administered:

- ["Medication, Not Administered": "Antithrombotic Therapy"]  
NoAntithromboticGiven  
where NoAntithromboticGiven.negationRationale in "Medical Reason"  
or NoAntithromboticGiven.negationRationale in "Patient Refusal"

# Denominator Exceptions

Patients with a documented reason for not administering antithrombotic therapy the day of or day after hospital arrival

## Denominator Exceptions:

### "No Antithrombotic Ordered During Hospitalization"

#### No Antithrombotic Ordered During Hospitalization:

- TJC."Ischemic Stroke Encounter" IschemicStrokeEncounter with "No Antithrombotic Ordered" NoAntithrombotic such that NoAntithrombotic.authorDatetime 1 day or less on or after day of start of Global."Hospitalization"(IschemicStrokeEncounter)

#### No Antithrombotic Ordered:

- "No Antithrombotic Ordered for Medical Reason or Patient Refusal" union "No Antithrombotic Administered"

#### No Antithrombotic Ordered for Medical Reason or Patient Refusal:

- ["Medication, Not Ordered": "Antithrombotic Therapy"] NoAntithromboticOrder where NoAntithromboticOrder.negationRationale in "Medical Reason" or NoAntithromboticOrder.negationRationale in "Patient Refusal"

#### No Antithrombotic Administered:

- ["Medication, Not Administered": "Antithrombotic Therapy"] NoAntithromboticGiven where NoAntithromboticGiven.negationRationale in "Medical Reason" or NoAntithromboticGiven.negationRationale in "Patient Refusal"

# Denominator Exceptions

Patients with a documented reason for not administering antithrombotic therapy the day of or day after hospital arrival

## Denominator Exceptions:

### "No Antithrombotic Ordered During Hospitalization"

#### No Antithrombotic Ordered During Hospitalization:

- TJC."Ischemic Stroke Encounter" IschemicStrokeEncounter with "No Antithrombotic Ordered" NoAntithrombotic such that NoAntithrombotic.**authorDatetime** 1 day or less on or after day of start of Global."Hospitalization"(IschemicStrokeEncounter)

#### No Antithrombotic Ordered:

- "No Antithrombotic Ordered for Medical Reason or Patient Refusal" union "No Antithrombotic Administered"

#### No Antithrombotic Ordered for Medical Reason or Patient Refusal:

- ["Medication, Not Ordered": "Antithrombotic Therapy"]  
NoAntithromboticOrder  
where NoAntithromboticOrder.negationRationale in "Medical Reason"  
or NoAntithromboticOrder.negationRationale in "Patient Refusal"

#### No Antithrombotic Administered:

- ["Medication, Not Administered": "Antithrombotic Therapy"]  
NoAntithromboticGiven  
where NoAntithromboticGiven.negationRationale in "Medical Reason"  
or NoAntithromboticGiven.negationRationale in "Patient Refusal"

# Denominator Exceptions

Patients with a documented reason for not administering antithrombotic therapy the day of or day after hospital arrival

## Denominator Exceptions:

### "No Antithrombotic Ordered During Hospitalization"

#### No Antithrombotic Ordered During Hospitalization:

- TJC. "Ischemic Stroke Encounter" IschemicStrokeEncounter with "No Antithrombotic Ordered" NoAntithrombotic such that NoAntithrombotic.*authorDatetime* 1 day or less on or after day of start of *Global. "Hospitalization"* (IschemicStrokeEncounter)

#### No Antithrombotic Ordered:

- "No Antithrombotic Ordered for Medical Reason or Patient Refusal" union "No Antithrombotic Administered"

#### No Antithrombotic Ordered for Medical Reason or Patient Refusal:

- ["Medication, Not Ordered": "Antithrombotic Therapy"]  
NoAntithromboticOrder  
where NoAntithromboticOrder.negationRationale in "Medical Reason"  
or NoAntithromboticOrder.negationRationale in "Patient Refusal"

#### No Antithrombotic Administered:

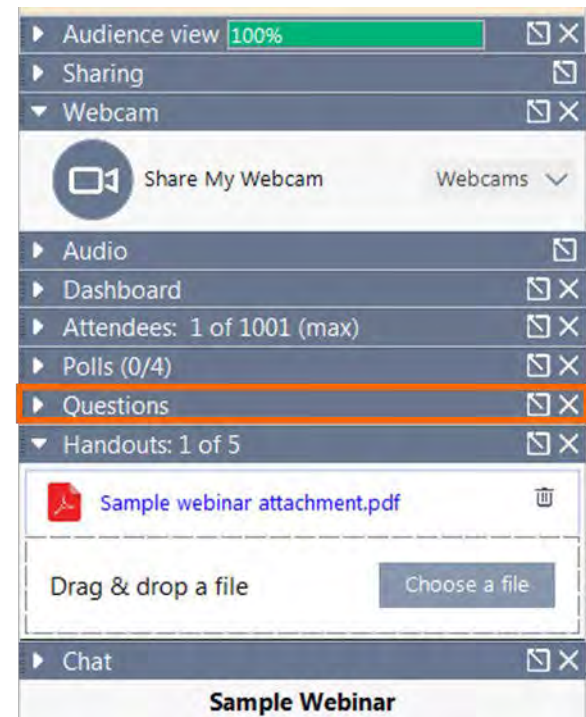
- ["Medication, Not Administered": "Antithrombotic Therapy"]  
NoAntithromboticGiven  
where NoAntithromboticGiven.negationRationale in "Medical Reason"  
or NoAntithromboticGiven.negationRationale in "Patient Refusal"

# Pioneers in Quality™

## Expert to Expert Series: STK-5 and AMI-8a



- Please submit questions now. Click the triangle next to “Questions” in your GoToWebinar participant dashboard to expand the Questions pane.
- Include your name and organization with your question.



Lynn Perrine, MSN, RN

Angela Flanagan, MSN, RN, CPHIMS

# AMI 8a - Primary PCI Received Within 90 Minutes of Hospital Arrival (CMS53v7)

January 29, 2019

*Lantana*  
CONSULTING GROUP

 The Joint Commission

 *Lantana*  
CONSULTING GROUP



# Changes specific to AMI-8a



## Logic

- Updated measure logic from Quality Data Model (QDM)-based logic to Clinical Quality Language (CQL)-based logic.
- Information on CQL can be found at the eCQI Resource Center at <https://ecqi.healthit.gov/cql>.

## Header

- Updated the measure description to make the language clear and concise. This is a language update only.
- Removed guidance statement related to the inability to explicitly express the primary percutaneous coronary intervention (PCI) with QDM-based logic.
- Updated the numerator statement to better align with the CQL-based logic and for consistency with the denominator statement.

## Value Sets

- Updated to add new codes and delete inactive codes.

# Measure description



Acute myocardial infarction (AMI) patients with a diagnostic ECG and ST-segment elevation, who receive a primary percutaneous coronary intervention (PCI) during their hospital stay, and the time from hospital arrival to PCI is 90 minutes or less

# Initial Population

## Narrative

Patients age 18 and older at the time of hospital admission with a principal diagnosis of an Acute or Evolving Myocardial Infarction (ST-segment elevation MI) with hospital stays  $\leq$  120 days during the measurement period

## ▲ Initial Population

"Inpatient Encounters"  
intersect "AMI Encounter"

# Initial Population

## Definitions

### ▲ Inpatient Encounters

["Encounter, Performed": "Encounter Inpatient"] Encounter  
where Global."LengthInDays"(Encounter.relevantPeriod) <= 120  
and Encounter.relevantPeriod ends during "Measurement Period"

### ▲ Global.LengthInDays(Value Interval<DateTime>)

difference in days between start of Value and end of Value

### ▲ AMI Encounter

["Encounter, Performed": "Encounter Inpatient"] Encounter  
with ["Patient Characteristic Birthdate"] BirthDate  
such that Global.CalendarAgeInYearsAt(BirthDate.birthDatetime,  
start of Encounter.relevantPeriod) >= 18  
and Encounter.principalDiagnosis in "Acute or Evolving MI"

### ▲ Global.CalendarAgeInYearsAt(BirthDateTime DateTime, AsOf DateTime)

years between ToDate(BirthDateTime) and ToDate(AsOf)

# Denominator

## Narrative

Initial population with an ECG performed and a primary PCI procedure closest to the inpatient admission that does not start after fibrinolytic therapy

### Denominator

```
"Initial Population" QualifyingEncounter
  let FirstPCI: First("PCI Procedure" FirstPCI
    where FirstPCI.relevantPeriod starts on or after Global."Hospital Arrival Time"(QualifyingEncounter)
    sort by start of relevantPeriod
  )
  with "Diagnostic Electrocardiogram" ECG
    such that ECG.relevantPeriod starts during Global."Hospitalization"(QualifyingEncounter)
    or ECG.relevantPeriod starts 1 hour or less on or before Global."Hospital Arrival Time"(QualifyingEncounter)
  where FirstPCI.relevantPeriod starts 1440 minutes or less on or after Global."Hospital Arrival Time"(QualifyingEncounter)
  and not exists ( "Fibrinolytic" FibrinolyticTherapy
    where FibrinolyticTherapy.relevantPeriod starts after Global."Hospital Arrival Time"(QualifyingEncounter)
    and FibrinolyticTherapy.relevantPeriod starts before start of FirstPCI.relevantPeriod
  )
)
```

# Denominator

## Definitions

### ▲ PCI Procedure

["Procedure, Performed": "PCI"]

### ▲ Diagnostic Electrocardiogram

["Diagnostic Study, Performed": "Electrocardiogram (ECG)"]

### ▲ Fibrinolytic

["Medication, Administered": "Fibrinolytic Therapy"]

# Denominator Exclusions

## Narrative

Patients who transferred from another hospital's inpatient, outpatient, or emergency department and ambulatory surgery center facilities are excluded

### ▲ Denominator Exclusions

```
"Denominator" DenominatorEncounter  
  where DenominatorEncounter.admissionSource in "Ambulatory surgical center"  
         or DenominatorEncounter.admissionSource in "Transfer From Outpatient"  
         or DenominatorEncounter.admissionSource in "Transfer From Emergency Department (ED) Locations"  
         or DenominatorEncounter.admissionSource in "Transfer From Inpatient"
```

# Denominator Exclusions

## Terminology

- valueset "Acute or Evolving MI" using "2.16.840.1.113883.3.666.5.3022"
- valueset "Ambulatory surgical center" using "2.16.840.1.113883.3.666.5.687"
- valueset "Aortic balloon pump insertion" using "2.16.840.1.113883.3.666.5.1151"
- valueset "Cardiopulmonary arrest" using "2.16.840.1.113883.3.666.5.748"
- valueset "Electrocardiogram (ECG)" using "2.16.840.1.113883.3.666.5.735"
- valueset "Emergency Department Visit" using "2.16.840.1.113883.3.117.1.7.1.292"
- valueset "Encounter Inpatient" using "2.16.840.1.113883.3.666.5.307"
- valueset "Endotracheal Intubation" using "2.16.840.1.113762.1.4.1045.69"
- valueset "Ethnicity" using "2.16.840.1.114222.4.11.837"
- valueset "Fibrinolytic Therapy" using "2.16.840.1.113883.3.666.5.736"
- valueset "ONC Administrative Sex" using "2.16.840.1.113762.1.4.1"
- valueset "Payer" using "2.16.840.1.114222.4.11.3591"
- valueset "PCI" using "2.16.840.1.113762.1.4.1045.67"
- valueset "Race" using "2.16.840.1.114222.4.11.836"
- valueset "Transfer From Emergency Department (ED) Locations" using "2.16.840.1.113883.3.666.5.3006"
- valueset "Transfer From Inpatient" using "2.16.840.1.113883.3.666.5.3013"
- valueset "Transfer From Outpatient" using "2.16.840.1.113883.3.67.1.101.950"
- valueset "Ventricular Assist Device placement" using "2.16.840.1.113883.3.666.5.3015"



# Numerator

## Narrative

Initial population whose time from hospital arrival to primary PCI is 90 minutes or less

### ▲ Numerator

"Initial Population" QualifyingEncounter  
with "PCI Procedure" PCI  
such that PCI.relevantPeriod starts 90 minutes or less on or after Global."Hospital Arrival Time"(QualifyingEncounter)

# Numerator

## Definitions

### ▲ PCI Procedure

["Procedure, Performed": "PCI"]

## Functions

### ▲ Global.Hospital Arrival Time(Encounter "Encounter, Performed")

start of First(("Hospitalization Locations"(Encounter))HospitalLocation  
sort by start of locationPeriod  
) .locationPeriod

# Denominator Exceptions

## Narrative

Patients who did not receive PCI within 90 minutes and have a documented reason.

Documented reasons include:

- "Diagnosis: Cardiopulmonary arrest"
- "Procedure, Performed: Endotracheal Intubation"
- "Procedure, Performed: Aortic balloon pump insertion"
- "Procedure, Performed: Ventricular Assist Device placement"

## ▲ Denominator Exceptions

```
( "Procedure Exceptions Within 90 Minutes of Arrival"  
  union "Diagnosis Exception"  
)
```

# Denominator Exceptions

## Definitions

### ▲ Procedure Exceptions Within 90 Minutes of Arrival

"Inpatient Encounters" Encounter  
with "Exception Procedures" ExceptionProcedures  
such that ExceptionProcedures.relevantPeriod starts 90 minutes or less on or after Global."Hospital Arrival Time"  
(Encounter)

#### ▲ Exception Procedures

( ["Procedure, Performed": "Endotracheal Intubation"]  
union ["Procedure, Performed": "Aortic balloon pump insertion"]  
union ["Procedure, Performed": "Ventricular Assist Device placement"]  
)

### ▲ Diagnosis Exception

"Inpatient Encounters" Encounter  
with ["Diagnosis": "Cardiopulmonary arrest"] CardiacArrest  
such that CardiacArrest.prevalencePeriod starts 90 minutes or less on or after start of  
Global.Hospitalization(Encounter)

# Frequently asked questions



# QRDA-714

## Question

Should ICD-10 code I21.9 be included in the AMI value set (2.16.840.1.113883.3.666.5.3022)? It seems as though it should be included.

## Answer

The logic was changed during the 2018 Annual Update to capture acute or evolving myocardial infarctions (MI) within the initial population. An acute or evolving MI is an ST-segment elevation MI. Since ICD-10-CM code I21.9 is for an unspecified acute MI it is not included.

## Question

For CMS53v7 numerator condition:

"Initial Population" Qualifying Encounter  
with "PCI Procedure" PCI

such that PCI.relevantPeriod starts 90 minutes or less on or after  
Global."Hospital Arrival Time" (Qualifying Encounter)

Do we have to check the first Arrival time irrespective of the location (ED or IP)?

## Answer

Yes. The intent of the measure is to determine if a PCI procedure was performed within 90 minutes of hospital arrival - either from the start of the ED encounter if the ED visit ends one hour or less before the start of the inpatient encounter, or the start of the inpatient encounter with no preceding ED visit.

# Resources



1. eCQI Resource Center: <https://ecqi.healthit.gov/cqi>
  - One stop shop for all information related to eCQM's
  - Find EH program information via: <https://ecqi.healthit.gov/eligible-hospital/critical-access-hospital-ecqms> such as:
    - Measure specifications
    - Technical Release Notes- which states all changes made to each measure during annual updates and during the addendum (code updates)
    - eCQM Measure Flows- to help understand the measure algorithms
  - Links to many Educational Resources such as:
    - CQL Standards: <https://ecqi.healthit.gov/cqi-clinical-quality-language>
    - QDM (Quality Data Model): <https://ecqi.healthit.gov/qdm-quality-data-model>
      - QDMv5.3 Annotated is used for the 2019 reporting
    - eCQM Implementation Check List: <https://ecqi.healthit.gov/ecqm-implementation-checklist>
    - Previous recordings & slide deck presentations: <https://ecqi.healthit.gov/cqi/cqi-educational-resources>
  - Events page to see and register for upcoming educational events <https://ecqi.healthit.gov/ecqi/ecqi-events>
2. Value Set Authority Center (VSAC): <https://vsac.nlm.nih.gov/>
  - To look up the codes listed in the value sets of a measure
  - Requires license but free of charge
  - Quick link to download valuesets/Direct reference codes from the VSAC: <https://vsac.nlm.nih.gov/download/ecqm?rel=20180917>



# Resources

## 3. Technical CQL Resources:

- Formatting and Usage: <https://github.com/esacinc/CQL-Formatting-and-Usage-Wiki/wiki>
- CQL GitHub Tools Repository: [https://github.com/cqframework/clinical\\_quality\\_language](https://github.com/cqframework/clinical_quality_language)
- CQL Specification - CQL Release 1, Standard for Trial Use (STU) 2
  - [http://www.hl7.org/implement/standards/product\\_brief.cfm?product\\_id=400](http://www.hl7.org/implement/standards/product_brief.cfm?product_id=400)
  - <http://cql.hl7.org/STU2/index.html>
- CQL-Based HQMF IG - Release 1, STU 2.1
  - [http://www.hl7.org/implement/standards/product\\_brief.cfm?product\\_id=405](http://www.hl7.org/implement/standards/product_brief.cfm?product_id=405)

## 4. To submit an issue ticket for a CQL specific question, please visit the ONC JIRA site

- <https://oncprojecttracking.healthit.gov/support/projects/CQLIT>

## 5. To submit an issue ticket for a measure specific question, please visit the ONC JIRA site

- <https://oncprojecttracking.healthit.gov/support/projects/COM/issues>

## 6. Pioneers in Quality Expert to Expert Replies and Slides:

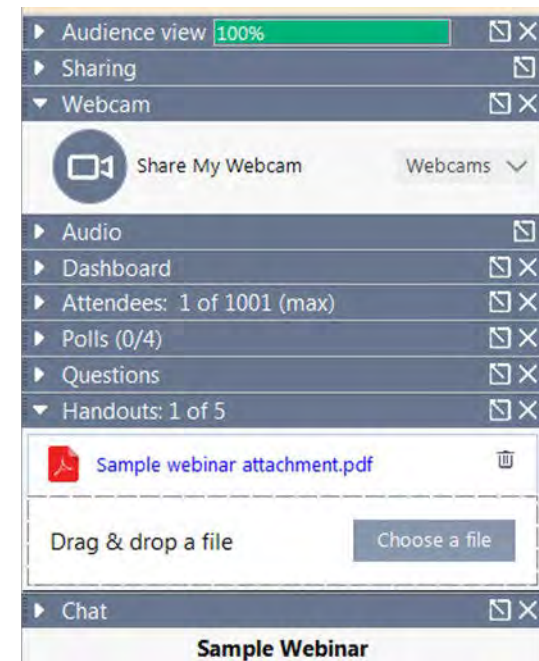
[https://www.jointcommission.org/piq\\_expert\\_to\\_expert\\_series/](https://www.jointcommission.org/piq_expert_to_expert_series/)

## 7. Pioneers in Quality Portal: [https://www.jointcommission.org/topics/pioneers\\_in\\_quality.aspx](https://www.jointcommission.org/topics/pioneers_in_quality.aspx)

## Reminder –

**Slides are available for download now!**

- See the “Handouts” Section in your participant GoToWebinar dashboard
- Click the triangle to open the Handouts list, select the slides for today’s session, and download.



# Pioneers in Quality™

## Expert to Expert Series: STK-5 and AMI-8a



The Joint Commission

Log In | Request Guest Access      Contact Us | Careers | JCR Web Store | Press Room

Forgot password? | Log In Help      Search  Go

Accreditation   Certification   Standards   Measurement   Topics   About Us   Daily Update

Home > Topic Details

Twitter Facebook Vimeo LinkedIn Share Print

Friday 11:30 CST, November 30, 2018

### Topic Details

**Sign up for News and Alerts**

Sign up here ▶

#### Topic Library Item

### Pioneers in Quality: Expert to Expert Series

November 30, 2018

The Joint Commission and the Centers for Medicare & Medicaid Services (CMS) are on their journey towards electronic clinical quality Language (CQL) logic expression language for a "deep dive" into the new Clinical Quality Language (CQL) Basics Webinar for Hospitals.

The Joint Commission's Pioneers in Quality: Expert to Expert Series is connecting you with eCQM developers in an "off the record" measure and specifically the new CQL express measure logic, followed by a discussion of common questions in advance to be addressed during the session.

The Expert to Expert Series will feature the following sessions. Register for each session below.

Session	Date	Registration Link	Slides	Transcripts	Recording	Q&A
PIQ#6: eCQM Clinical Quality Language (CQL) Basics Webinar for Hospitals	29-Nov-18	NA – Session has already occurred	<a href="#">11/29 PDF slide deck</a>	<a href="#">11/29 PDF transcript</a>	Not yet available	Not yet available
EE#1: STK-2, -3, & -6	11-Dec-18	NA – Session has already occurred	<a href="#">12/11 PDF slide deck</a>	Not yet available	Not yet available	Not yet available
EE#2: STK-5 and AMI-8a	29-Jan-18	<a href="https://attendee.gotowebinar.com/register/3913740621068329729">https://attendee.gotowebinar.com/register/3913740621068329729</a>	To be posted following session	To be posted following session	To be posted following session	To be posted following session
EE#3: ED-1 and -2	12-Feb-19	<a href="https://attendee.gotowebinar.com/register/8053319436273286145">https://attendee.gotowebinar.com/register/8053319436273286145</a>	To be posted following session	To be posted following session	To be posted following session	To be posted following session
EE#4: VTE-1 and -2	26-Feb-19	<a href="https://attendee.gotowebinar.com/register/129573441984732417">https://attendee.gotowebinar.com/register/129573441984732417</a>	To be posted following session	To be posted following session	To be posted following session	To be posted following session
EE#5: CAC-3 and EDHI-1a	5-Mar-19	<a href="https://attendee.gotowebinar.com/register/7092534290085603329">https://attendee.gotowebinar.com/register/7092534290085603329</a>	To be posted following session	To be posted following session	To be posted following session	To be posted following session
EE#6: PC-01 and 05	26-Mar-19	<a href="https://attendee.gotowebinar.com/register/1876921718893015041">https://attendee.gotowebinar.com/register/1876921718893015041</a>	To be posted following session	To be posted following session	To be posted following session	To be posted following session

Visit [https://www.jointcommission.org/piq\\_expert\\_to\\_expert\\_series/](https://www.jointcommission.org/piq_expert_to_expert_series/) to register for future sessions and access slides, webinar recordings, and Q&A documents when available.

# Pioneers in Quality™

## Expert to Expert Series: STK-5 and AMI-8a

### Pioneers in Quality

Pioneers in Quality - Home

Proven Practices Webinar Series

#### Pioneers in Quality™ Recognition

- 2018 Pioneers in Quality Expert and Solution Contributors List
- Pioneers in Quality Proven Practices Collection
- 2017 Pioneers in Quality™ Hospital eCQM Contributor Recognition Lists

#### 2017 Annual Report on Quality and Safety

- America's Hospitals: Improving Quality and Safety – The Joint Commission's Annual Report 2017

#### Press Releases



#### 2018 Proven Practices Collection and Webinar Series

Four hospitals and/or health systems were recognized as 2018 Pioneers in Quality™ Expert Contributors for their efforts to advance the evolution and utilization of electronic clinical quality measures (eCQMs). These organizations presented during the Joint Commission's Pioneers in Quality™ 2018 eCQM Proven Practices webinar series and are featured within the 2018 Proven Practice Collection along with the five Experts Contributors recognized in 2017. You can access the 2018 Proven Practices Collection [here](#).

- **August 23, 11 a.m. CT:** "Electronic health record (EHR) refinement and system EHR transition," presented by Expert Contributors Medstar St. Mary's Hospital and BJC Healthcare. For more information, including the session recording, slides, and Q&A visit the [webinar landing page](#).
- **September 18, 1 p.m. CT:** "An evolutionary approach and a model of collaboration," presented by Expert Contributors Vail Health Hospital and Texas Health Resources. For more information, including the session recording, slides, and Q&A visit the [webinar landing page](#).
- **Proven Practices Webinar Series.** For more information, including links to all 2017 and 2018 session's recordings, slides, and Q&A, see the [Proven Practices landing page](#).

#### About the Program

Pioneers in Quality (PIQ) is a Joint Commission program to assist hospitals on their journey towards electronic clinical quality measure adoption that includes educational programs (e.g., webinars for CEUs), a resource portal, recognition



#### Pioneers in Quality: eCQM "Expert to Expert" Series Series Information/Session Replays

#### Promotional Video



#### Webinar Replays / Related Documentation

- Pioneers in Quality™ 2019 Joint Commission ORYX Reporting Requirements: Your Questions Answered
- Pioneers in Quality™ 2018 eCQM Proven Practices: An evolutionary approach and a model of collaboration

Visit [https://www.jointcommission.org/topics/pioneers\\_in\\_quality.aspx](https://www.jointcommission.org/topics/pioneers_in_quality.aspx) for additional information about Pioneers in Quality and the Proven Practices Program.



## CE Session Evaluation Survey and Certificate



Please click on the survey link as you exit GoToWebinar or in the automated email you will receive tomorrow. You will be directed to the evaluation survey.

We use your feedback to inform future content and assess the quality of our sessions.

**The evaluation closes in 2 weeks.**

After the evaluation period closes, a printable certificate will be emailed to all participants that complete the survey.



**Thank you for attending this session.**

